

PONSSE

DUAL  
BLIFALD

# ***TEAMWORK WITH A SINGLE MACHINE***





**PONSSE BUFFALO DUAL**

# ***TEAMWORK WITH A SINGLE MACHINE***

PONSSE Buffalo Dual is a combination of an efficient harvester and a powerful forwarder. With the Dual, you can operate economically with the operating costs of a single machine. It can be converted from a harvester into a forwarder and back in just a few minutes. Buffalo Dual's technology is of the absolute Ponsse quality, tested in practice and similar to other models.

PONSSE Buffalo Dual is at its best at sites where flexibility is valued. It is also a cost-efficient solution at sites where the use of two machines is too much and too expensive. The Dual is based on the PONSSE Buffalo forwarder. It is a simple and strong dual machine solution that does not require any expensive special components. The capacity of the reliable machine is more than enough for heavy thinning and energy wood harvesting. Dual is also ideal for the regeneration felling of small-diameter stands. Its load-carrying capacity is 14 tons, or up to 15 tons with a balanced bogie.





# PONSSE BUFFALO DUAL

A powerful crane, efficient hydraulics and high tractive force ensure smooth forwarding, and harvesting that is nearly as efficient as with a specialized harvester. Being a full-blooded forwarder, loading and driving can be carried out effectively, while unloading and the sorting of different assortments can be performed effortlessly. For harvesting, PONSSE Buffalo Dual offers the properties of modern harvesters, including the PONSSE H5 harvester head and the Opti4G measuring device system. Its Mercedes-Benz diesel engine offers volumes of power and torque, even in challenging harvesting situations.

## CABIN AND CONTROL SYSTEM

The most spacious and comfortable cabin and the most ergonomic controls guarantee the best working comfort. PONSSE Opti information system is an advanced and easy-to-use interface for machine and work management.

## ENGINE AND HYDRAULICS

Powered by a Mercedes-Benz engine, producing well-behaving power over a broad rpm range, the Buffalo Dual moves with the toughness of its namesake. Its fast response to the throttle, steady torque and strong hydraulics make the machine consistent and easy to use.

## FRAME STRUCTURES AND FRAME OSCILLATION LOCK

The design of the Buffalo Dual frame focuses particularly on durability and ease of maintenance. The reliable frame oscillation lock, equipped with hydraulic cylinders, is solid and acts as a shock absorber when driving. In addition to reliability, the functional positioning and the ability to service the components are typical characteristics of the structure.

## INTERCHANGEABLE

A simple and solid frame structure, taking serviceability into account. The rear frame is equipped with a quick coupling for a load space and rear frame extension. When these are disconnected, the machine works as a harvester.

## CRANE

PONSSE K90 Dual+ is a powerful and strong crane which is effective in harvesting and loading. Loader reach is 9 m (29.5 feet).

H5



## HARVESTER HEADS

PONSSE harvester heads are known for efficiency/weight ratios and durable structure, which are second to none. Buffalo Dual is equipped with the highly powerful PONSSE H5 harvester head. This harvester head is also excellent in multi-stemming, without any additional equipment.





CABIN

WORKPLACE WITH A VIEW

THE BUFFALO DUAL HAS NO OBSTACLES TO PRODUCTIVITY IN SIGHT.

The PONSSE Buffalo Dual cabin is your vantage point to the latest in forest machine technology. It is a work environment for professionals who value comfort, safety and ergonomics.

The control devices are the best you will find in forest machines in terms of their ergonomics. The large cabin, expansive windows and thin window pillars ensure excellent visibility in all directions.

Optionally the cabin can also be equipped with the best forest machine seat in the world, PONSSE Seat.



PONSSE SEAT \*

UNBEATABLE COMFORT

THE ONLY SEAT ON THE MARKET SPECIALLY DESIGNED FOR FOREST MACHINE DRIVERS.

COMFORT ABOVE ALL ELSE.

The breathable fabric and ergonomic seat supports, guarantee improved working comfort.

DURABLE AND EASILY MAINTAINABLE FABRIC.

Seat fabric is especially durable and the dirt repellent surface makes cleaning effortless.



RELIABLE AND STABLE BASE.

A strong base provides the seat with superior reliability and stability. Thanks to the suspension specifically designed for forest machines, the PONSSE Seat effectively decreases swinging and impact towards the operator.

EASY ACCESS TO SEAT CONTROLS AND BASE.

All adjustment controls are conveniently located at the front of the seat cushion. The base can also be accessed easily by removing the cushion.

\* PONSSE Seat is available as an option to all PONSSE machines.





**ACTIVE  
CARE**

#### **ENSURE MAXIMUM PRODUCTIVITY**

PONSSE Active Care service agreements offer the best possible service for forest machine entrepreneurs: you can focus on your logging, while Ponsse will make sure that the machine will maintain its performance and productivity from one logging site to the next. With the PONSSE Active Care service agreement, you can outsource the scheduled maintenance of your forest machine to Ponsse. Machines maintained regularly by professionals using only high-quality and original PONSSE parts, lubricants and filters remain in good operating condition and retain their value.



**MERCEDES-BENZ ENGINES**

# ***CLEANER AND MORE EFFICIENT***

**Explosive power and increased torque. Lower emission level and fuel consumption.**

The new Mercedes-Benz STAGE V emission engines are efficient and economical. The torque has been increased, and maximum torque can be reached at lower engine speeds.

The Mercedes-Benz STAGE V emission engines are modern, low-emission engines with significantly lower particulate matter (PM) and nitrogen oxide (NOx) emissions compared to engines of the previous emission levels (STAGE III and IV). In addition to particulate matter, the STAGE V engines also now control particulate volume with a particulate filter (DPF).

Outside Europe an EU Stage V/Tier 4F or Stage IIIA level Mercedes-Benz engine is used depending on market specific emission requirements.



**Our goal is to manufacture the most productive and economical forest machines on the market. We call this the PONSSE Boost/Save operating model.**

At Ponsse, we have always put the customers first.

For decades now, we have been developing the world's best cut-to-length forest machines as well as related services and information systems. The users of the machines are the best specialists in their field, and we closely listen to their feedback.

Together, we have managed to continue increasing the productivity and efficiency of harvesting and reduce the costs. This has been the result of long-term collaboration. However, we want to serve our customers even better.

Boost/Save means even more efficient products and better services for our customers. It means efficient and productive machines, agile product development, thorough training, comprehensive maintenance, original spare parts and the most modern information systems in the field.

Boost/Save means efficient and productive harvesting!

## **PONSSE BOOST/SAVE POWER AND SAVINGS**



## **PONSSE MANAGER REAL-TIME MANAGEMENT**

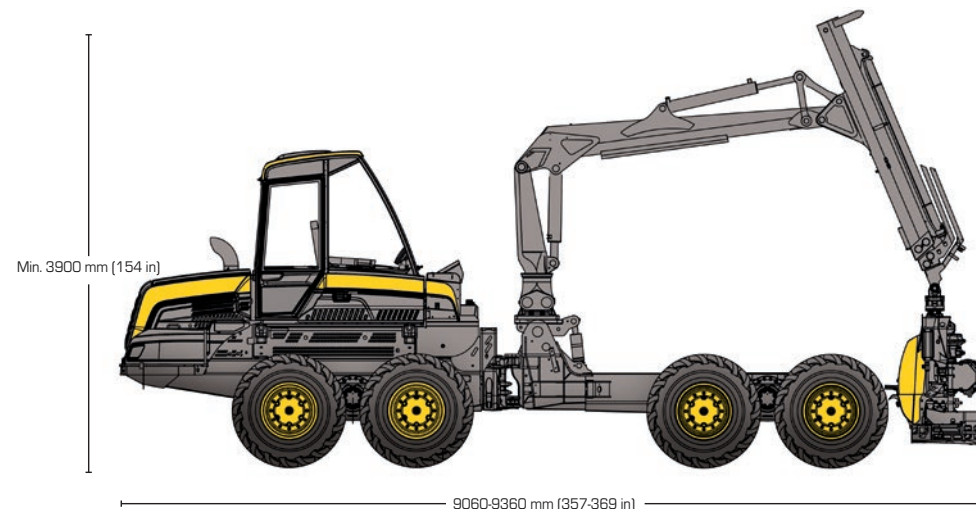
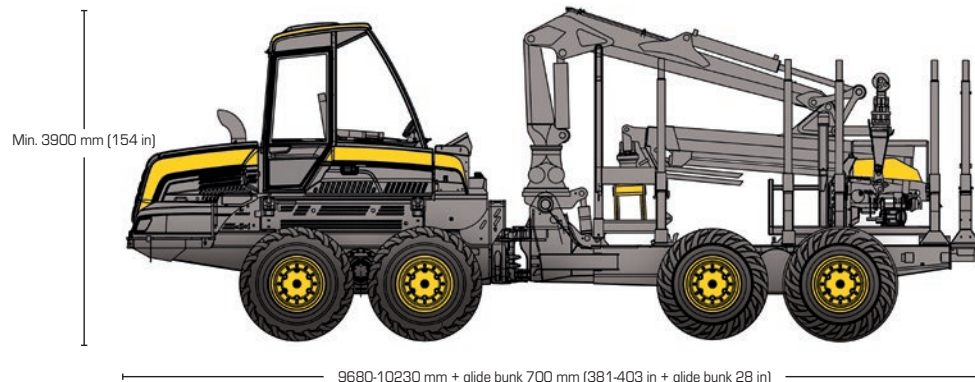
**PONSSE Manager connects forest machines to an information network.**

PONSSE Manager, the modern digitalization platform for forest machines, enables comprehensive services now and in the future. The easy-to-use tool offers assistance in harvesting equipment maintenance and work planning, along with providing access to functional and extensive reporting.

PONSSE Manager provides real-time information on equipment performance and work site status. The solution can be easily used via smartphone, tablet or computer.



# PONSSE BUFFALO DUAL



## DIMENSIONS

Weight:	as forwarder 19 100 kg (42,108 lb) as harvester 20 300 kg (44,754 lb) in standard equipment 21 500 kg (47,399 lb)
Length:	as forwarder 9 680 - 10 230 mm (381-403 in) + glide bunk 700 mm (28 in) as harvester 9 060-9 360 mm (357-369 in)
Width:	2 895-3 085 mm (114-121 in)
Transportation height:	3 900 mm (154 in)
Ground clearance:	680 mm (27 in)
Steering angle:	±44°
Outer turning radius:	7 960 mm (313 in) (short rear frame)

## CRANE K90 Dual+

Lifting moment (gross):	160 kNm (118 lb-ft)
Reach:	9 m (29.5 ft)

## HARVESTER HEAD

Model:	PONSSE H5
--------	-----------

## ENGINE

Model:	MB OM 936 LA EU Stage V MB OM 936 LA EU Stage V/Tier 4F MB OM 906 LA Stage IIIA
Power:	EU Stage V & EU Stage V/Tier 4F: 210 kW (286 hp) Stage IIIA: 205 kW (275 hp)
Torque:	EU Stage V & EU Stage V/Tier 4F: 1 200 Nm, Stage IIIA: 1 100 Nm (1 200-1 600 rpm))
Tractive force:	185 kN (41,589 lbf)
Fuel tank volume:	200 l (53 gal US)

## HYDRAULIC SYSTEM

Control system:	PONSSE Opti Control
Working pump:	190 cm <sup>3</sup> (11.6 cu in)
Oil tank volume:	170 l (45 gal US)

## GRAPPLE

Model:	Several different grapple alternatives
--------	--

## LOAD SPACE

Capacity:	14 000 kg (30,865 lb) 15 000 kg (33,069 lb) with balanced bogies
Load space cross-sectional area:	4,5–5 m <sup>2</sup>
Load space length:	4 100-4 650 mm (161-183 in) + glide bunk 700 mm (28 in)
Log gate can be moved hydraulically.	



**Ponsse Plc**  
Ponssentie 22  
FI-74200 Vieremä  
FINLAND  
Tel. +358 20 768 800  
www.ponsse.com

**Ponsse UK Ltd**  
4 Annan Business Park  
Annan  
Dumfriesshire  
DG12 6TZ  
UNITED KINGDOM  
Tel. +44 1461 207 510

**Ponsse Machines Ireland Ltd**  
Cappakeel, Erno  
Portlaoise  
R32NN28  
Laois  
IRELAND  
Tel. +353 57 863 3762

**Ponsse North America, Inc**  
4400 International Lane  
Rhineland, WI 54501  
USA  
Tel. +1 715 369 4833  
Fax +1 715 369 4838



**A logger's best friend**  
[www.ponsse.com](http://www.ponsse.com)

Images are for illustration purposes only.

The manufacturer reserves the right to make technical changes and improvements. The machines and contents of the brochure include optional features.

PONSSE Buffalo Dual 10/21. ENG Copyright © 2021 Ponsse Plc. PONSSE is a registered trademark of Ponsse Plc and other product names are trademarks of Ponsse Plc.